

# 2016 Cook Inlet Vessel Traffic Overview

Marine Exchange of Alaska  
and  
Nuka Research and Planning Group



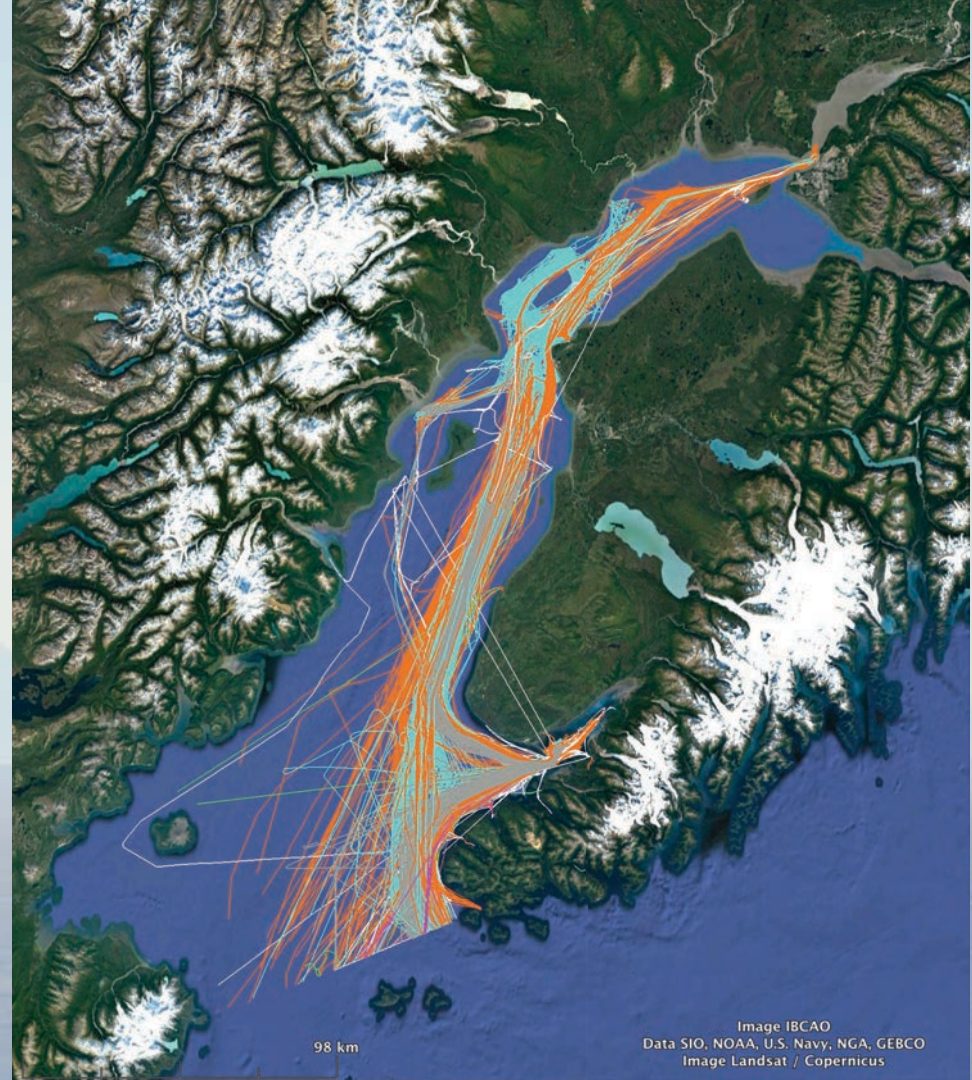
# Topics

- Scope
- Vessel types and numbers
- Analysis of tracks and times by vessel type
- Vessel movements
- Petroleum movements
- Tools
- Feedback



# Scope

- Vessels  
>300 gross tons
- 2016
- Some data  
missing from  
March





# Vessel Types – Deep Draft

- Cargo

- Bulkers
  - Containers
  - Other

- Passenger

- Cruise Ship

- Tankers



# Vessel Types – Light Draft

- Cargo
  - Other
- Passenger
  - Ferries
- Tugs
  - Articulated
  - Conventional
- ~~• Fishing~~
- ~~• Other~~
- ~~• Military~~
- ~~• Other~~



# Vessel Numbers

Deep Draft	
Type	Number
Tanker	21
Bulk Carriers	5
Container Ship	4
Cargo Other	4
Cruise Ship	2
Total	36

Light Draft	
Type	Number
Tug	48
Cargo	9
Ferry	2
Total	59



# Vessel Operating Time

Cumulative time vessel was underway or making way in 2016, divided by 24 hours (not calendar days).



# Vessel Operating Time

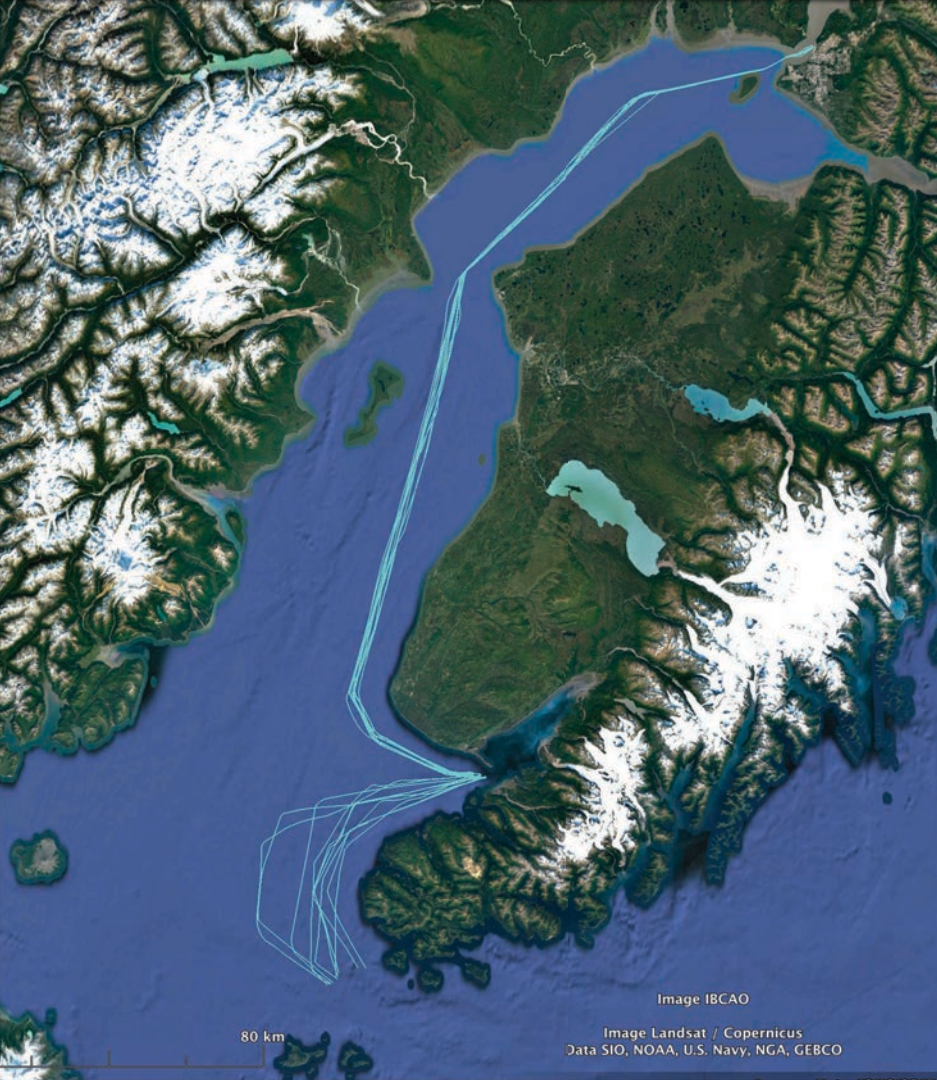
Deep Draft	
Type	Days
Tanker	97
Container Ship	68
Cargo Other	63
Cruise Ship	10
Bulk Carriers	7
Total	244

Light Draft	
Type	Days
Tug	780
Cargo	511
Ferry	45
Total	1,336





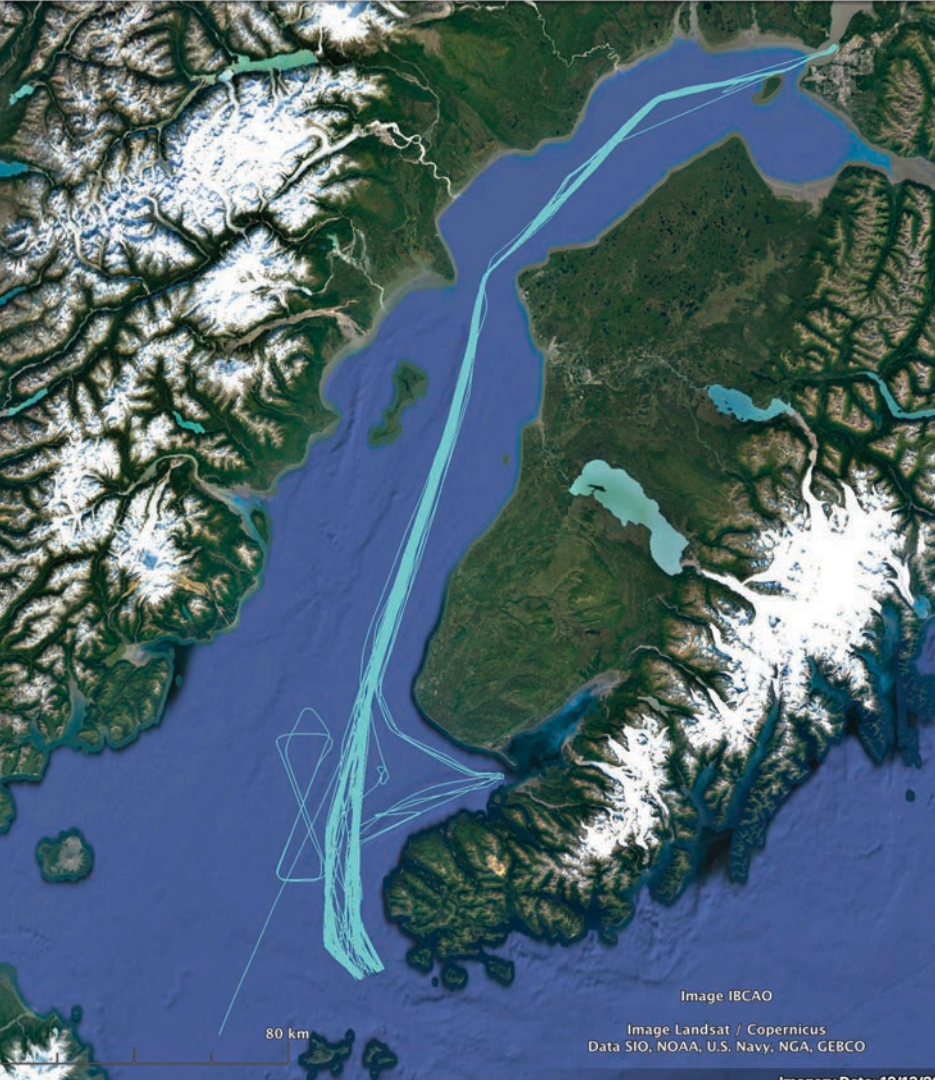
# CARGO BULK CARRIERS



	Days	DWT
DIAMOND HARBOUR	1.4	33,745
LONGVIEW LOGGER	1.4	33,171
JIA XING	1.3	32,142
OAK HARBOUR	1.3	29,671
TAMPA BAY	1.3	20,472



# CARGO OTHER



	Days	DWT
MIDNIGHT SUN	29.6	65,314.0
NORTH STAR	30.8	65,314.0
NORDANA SOPHIE	1.2	7,659.0
THORCO AMBITION	1.4	6,296.0



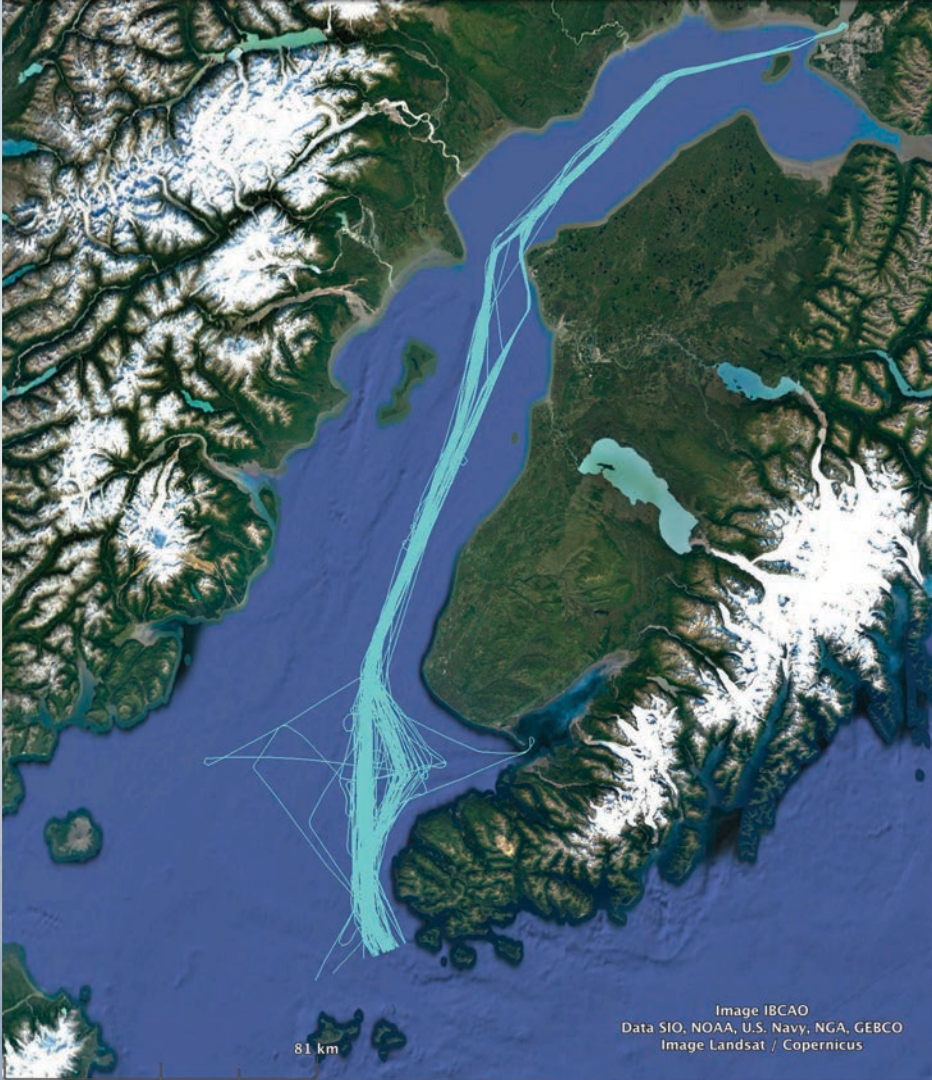


Image IBCAO  
Data SIO, NOAA, U.S. Navy, NGA, GEBCO  
Image Landsat / Copernicus

# CARGO CONTAINER SHIP



	Days	DWT
MATSON KODIAK	21.6	20,668
MATSON TACOMA	16.7	20,668
MATSON CONSUMER	14.9	25,651
MATSON ANCHORAGE	14.7	21,282





# PASSENGER CRUISE SHIP



	Days	DWT
MAASDAM	9.4	7,406
SILVER SHADOW	0.3	2,980





# TANKERS - NIKISKI



	Days	DWT
OVERSEAS MARTINEZ	26.3	46,653
OVERSEAS NIKISKI	16.0	46,666
OVERSEAS BOSTON	14.6	46,802
EVERGREEN STATE	4.5	48,641
TULIP	3.0	105,511
ZALIV AMERIKA	2.6	102,076
NAVIG8 TURQUOISE	1.6	49,516
ROSS SEA	1.3	114,542



# TANKERS - ANCHORAGE



	Days	DWT
OVERSEAS NIKISKI	16.0	46,666.0
OVERSEAS BOSTON	14.6	46,802.0
JURKALNE	9.9	52,620.0
EVERGREEN STATE	4.5	48,641.0
EMPIRE STATE	2.4	48,635.0
CHEMBULK MINNEAPOLIS	1.6	33,802.8
NAVIG8 TURQUOISE	1.6	49,516.0
STELLAR LILAC	1.6	12,601.0
PTI CYGNUS	1.4	51,218.0
FPMC 18	1.3	26,453.2
CHALLENGE PARAGON	1.3	45,920.0
HARRISON BAY	1.3	49,990.0
HAFNIA DAISY	1.3	25,702.4
ORIENTAL DIAMOND	1.2	50,323.0
NORD INNOVATION	1.2	24,396.4
STI QUEENS	1.2	49,990.0
STI BROOKLYN	1.1	49,990.0

# Deep Draft Summary

- Frequent Fliers – 9 ships represent 76% of the operation time of deep draft vessels in Cook Inlet.
- Tankers are the most numerous and have the most operating days.

NORTH STAR  
MIDNIGHT SUN  
OVERSEAS MARTINEZ  
MATSON KODIAK  
MATSON TACOMA  
OVERSEAS NIKISKI  
MATSON CONSUMER  
MATSON ANCHORAGE  
OVERSEAS BOSTON

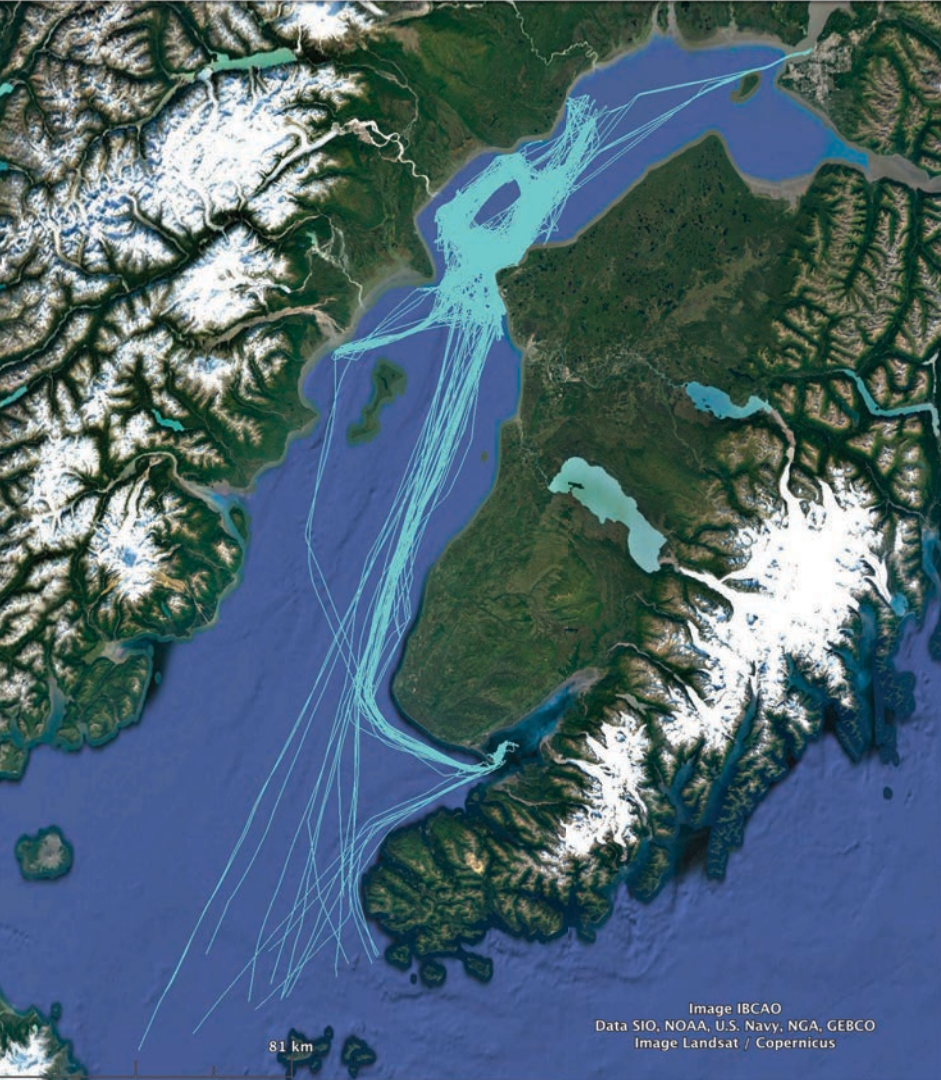




# FERRIES



	Days	Gross Tons
TUSTUMENA	36.6	4,529
KENNICOTT	8.4	12,635



# CARGO



	Days	Gross Tons
TITAN	138.0	612
PERSEVERANCE	103.3	1,020
SOVEREIGN	91.7	709
RESOLUTION	72.0	750
CHAMPION	61.3	279
HOS SILVER ARROW	29.5	1,863
RESOLVE PIONEER	8.0	1,058
SAM M TAALAK	4.0	455
GRETA	3.5	481



# ARTICULATED TUG

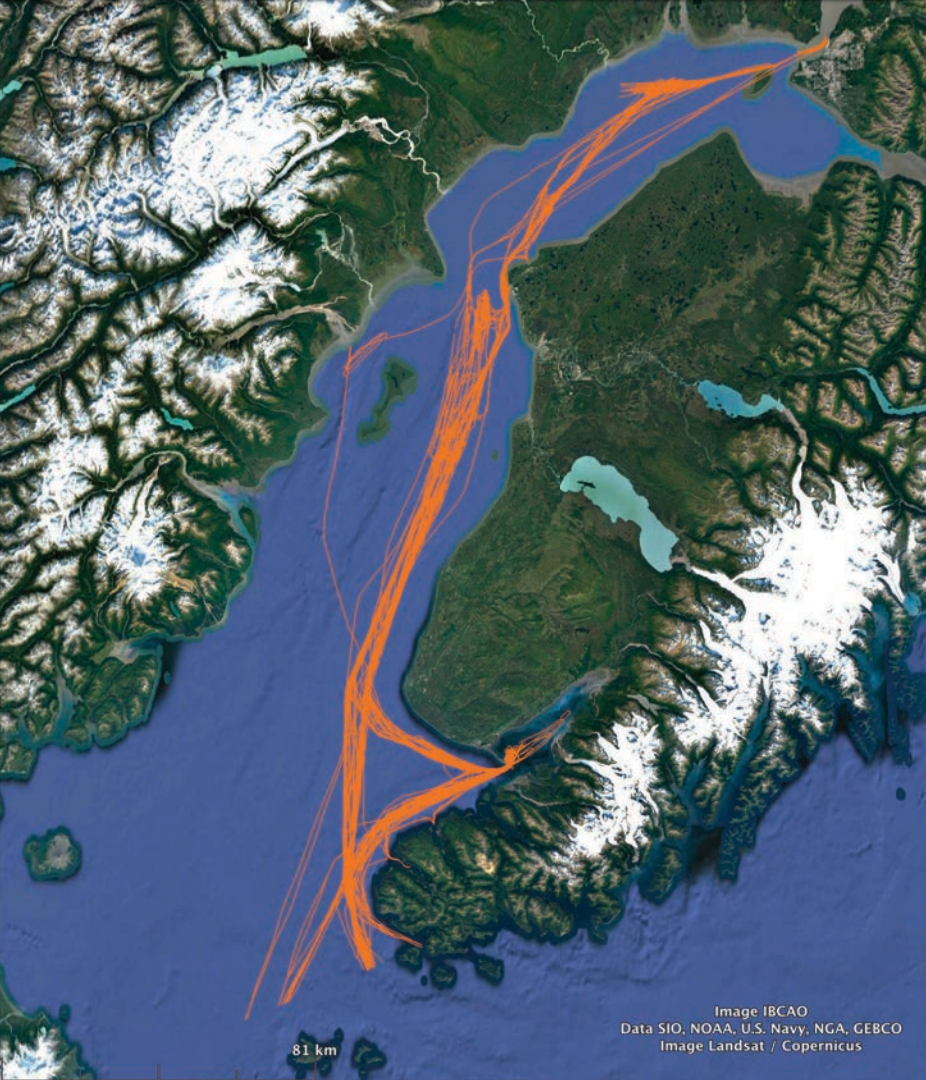


Image IBCAO  
Data SIO, NOAA, U.S. Navy, NGA, GEBCO  
Image Landsat / Copernicus

	Days	Gross Tons
JAVA SEA	61.2	416
PACIFIC WOLF	58.7	485
BISMARCK SEA	12.4	606





# TUG



	Days	Gross Tons
BOB FRANCO	229.3	340
GLADYS M	107.7	538
GLACIER WIND	74.3	155
STELLAR WIND	37.4	97
DANIEL FOSS	37.3	1052
MILLENNIUMSTAR	34.1	268
TUG MUDCAT	29.9	125
ISLAND VOYAGER	21.8	330
PACIFIC FREEDOM	20.5	387
DEVON/Achievement	19.7	123
PACIFIC WARRIOR	18.5	149
PARAGON	11.2	421
MILLIE CRUZ	10.8	58
POLAR ENDURANCE	9.3	421
POLAR STORM	8.6	197
ARI CRUZ	8.5	62
WENDY O	8.4	248
POLAR VIKING	8.0	97
ANNA T	6.2	146
MILLENIUM FALCON	5.7	269
SCORPIUS	5.4	210
ARCTIC TITAN	5.2	210
POLAR CLOUD	5.2	421
POLAR RANGER	5.0	445
SIKU	4.4	347
REDOUBT	4.3	230
MIKE O'LEARY	3.7	314
SAM B	3.7	588
ST MICHAEL	3.2	269
OCEAN MARINER	3.2	75
SNOHOMISH	3.1	73
ARCTIC BEAR	2.7	497
WESTERN		
RANGER	2.7	
GUARDSMAN	2.6	273
TRIUMPH	2.3	143
OCEAN RANGER	2.1	347
MALOLO	2.0	334
GENE DUNLAP	2.0	113
OCEAN		
NAVIGATOR	1.8	333
DANA CRUZ	1.7	261
WESTERN		
NAVIGATOR	1.7	328
AUGUSTINE	1.7	496
ISLAND SCOUT	1.5	325
CHAHUNTA	0.5	268
MISS REBECCA	0.5	337
(blank)	0.5	366
FISH HAWK	0.1	321
OCEAN EAGLE	0.0	248

# Light Draft Summary

- Frequent Fliers – 12 vessels represent 77% of the operation time of light draft vessels in Cook Inlet.
- Tugs are the most numerous and have the most operating days of any vessel type.

BOB FRANCO

TITAN

GLADYS M

PERSEVERANCE

SOVEREIGN

GLACIER WIND

RESOLUTION

CHAMPION

STELLAR WIND

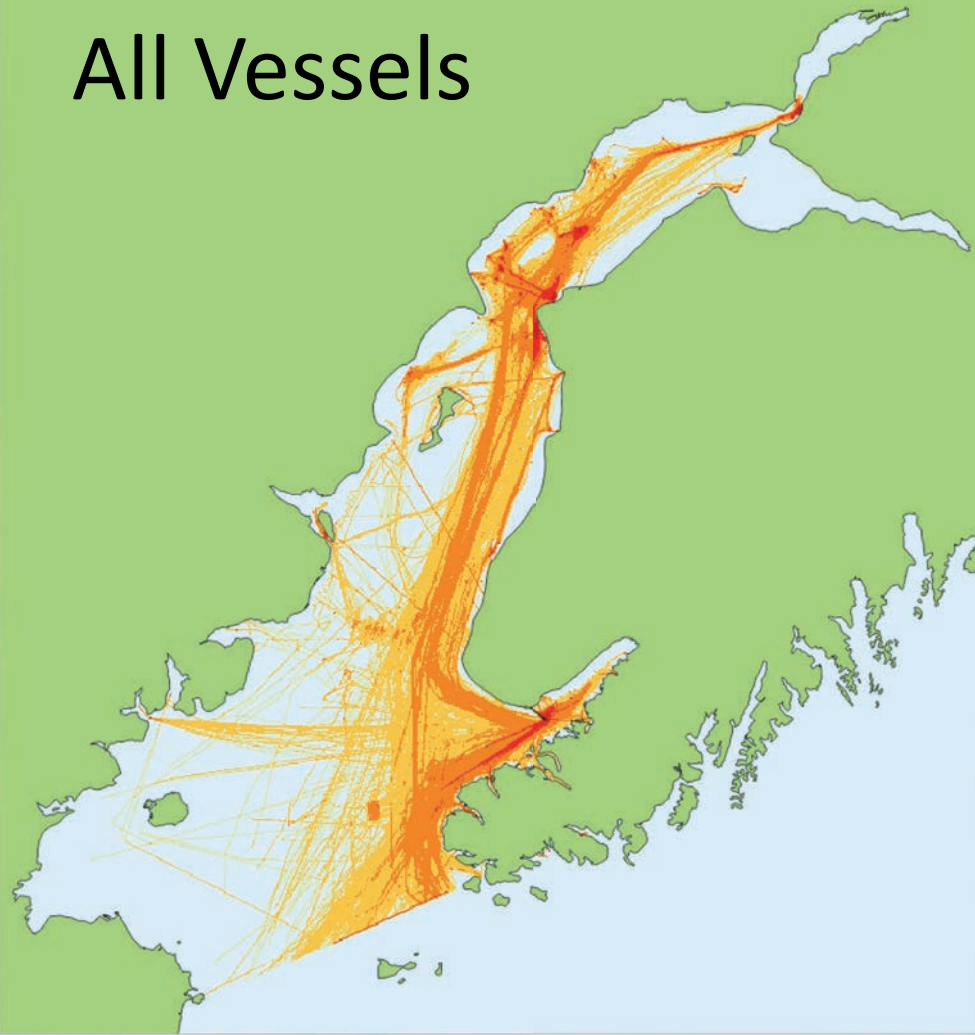
DANIEL FOSS

TUSTUMENA

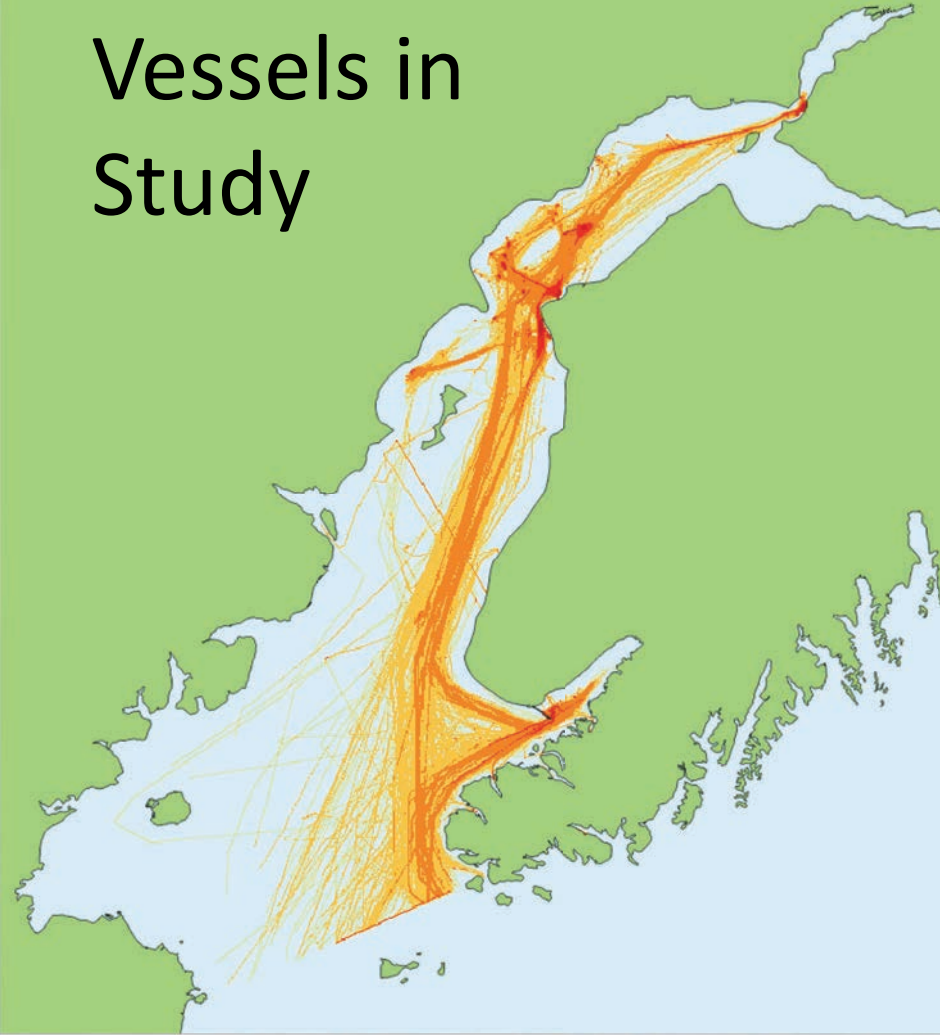
MILLENNIUMSTAR



All Vessels

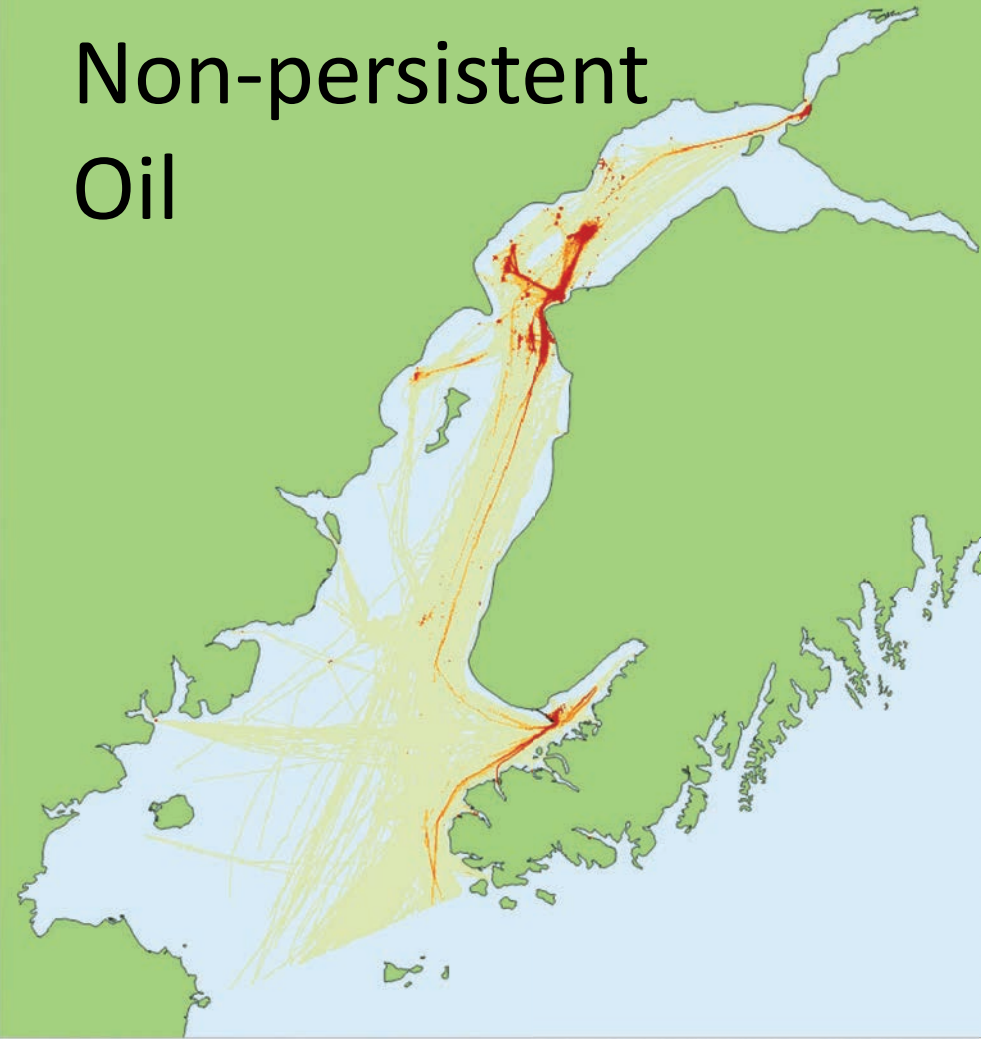


Vessels in  
Study

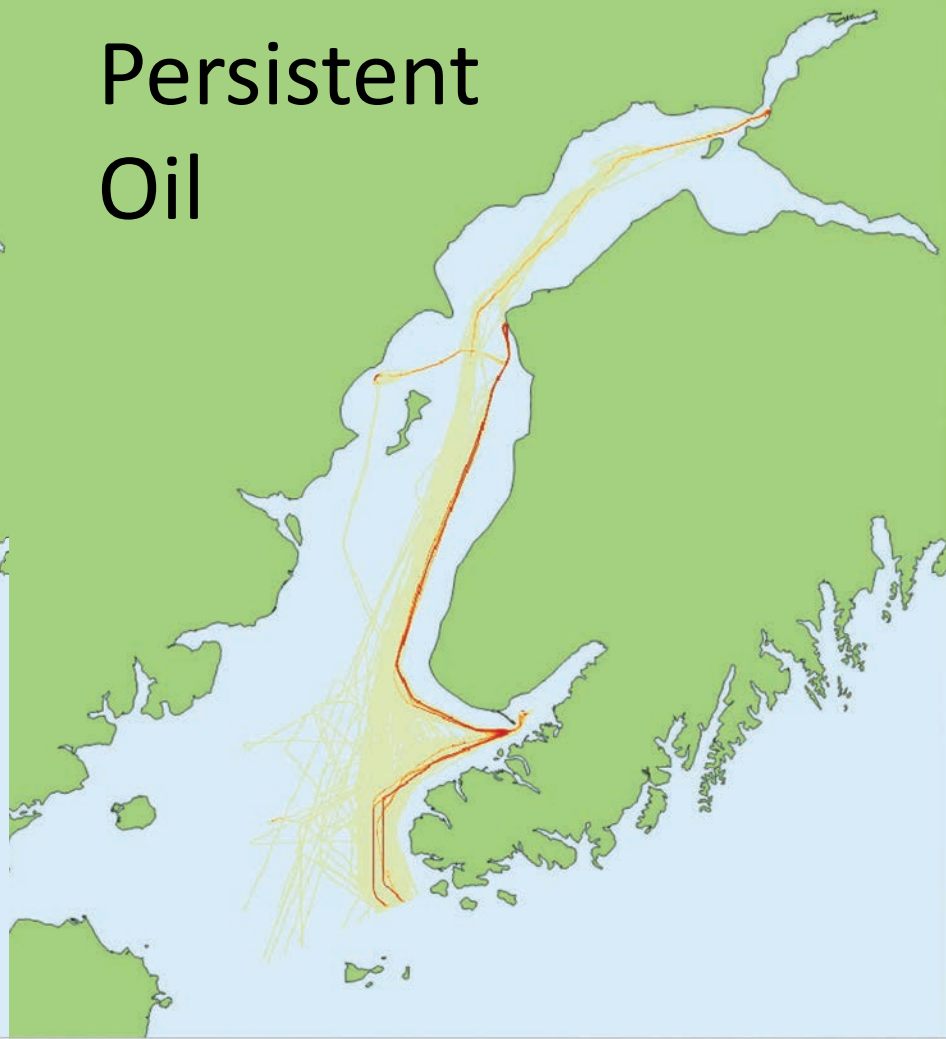




Non-persistent  
Oil



Persistent  
Oil



# Conclusions

- Cook Inlet has a low volume of vessel traffic compared to other west coast ports.
- The vessels that do operate here are dominated by frequent fliers whose crews are familiar with Cook Inlet conditions.





# Possible Resources for CIHSC

- Presentation of annual updates
- Web content
- Annual report
- Workshop



# Your Feedback

- Is vessel information useful for you?
- What outputs & frequency?
- How would you use it?
  - Complement your own understanding of vessel traffic patterns & changes
  - Anticipate trends
  - Inform Harbor Safety Plan & other efforts
  - Educate others

